

# PHOENIX OUTDOOR

by *Punchline*



# Our Mission

*The Punchline, Inc* has been manufacturing quality products for the decor industry since the year 2000. Adapting and evolving through every economic turn, each time expanding our manufacturing capabilities. We are proud to introduce our newest line of HDPE outdoor furniture - " **PHOENIX OUTDOOR** "

Our material is made with Tangent Sustainable Lumber, The highest quality HDPE lumber on the market. When combined with our 20+ years of design and manufacturing experience, we bring a product that provides excellent strength, exquisite style, and total comfort.

## Table Of Contents

Dining Tables .....	3-7
Dining Chairs .....	8
Accessory Tables .....	9
Surf Collection .....	10-13
Adirondacks .....	14-15
Gliders .....	16-17
Combo's .....	18-20
Chaise Lounge .....	21
Specialty Items .....	22 - 23
Warranty & Care.....	24

# Dining Tables

Our dining tables deliver when it comes to style. Let your outdoor living space stand out from the rest. Tables offered in Dining, Counter, and Bar Heights - Dining = 30" Counter = 36" Bar = 42". Umbrella holes available upon request on any table.



## Outer Mitered Table

Section 1.35 - 1.43 (Customizable Tables)

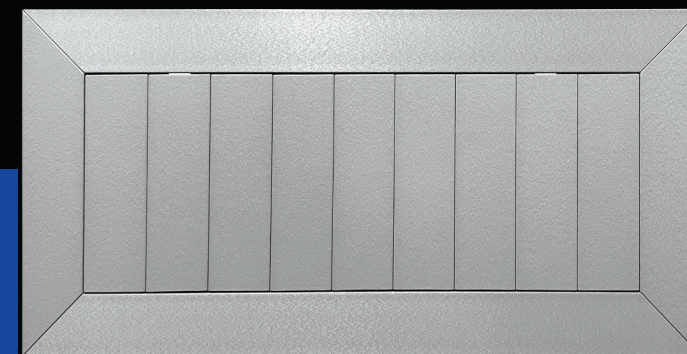
(On this style only)

Table top sizes are customizable and range between the following dimensions:

30"W x 50"D - 42"W x 72"D

Available in all heights & colors

Shown in Counter Height



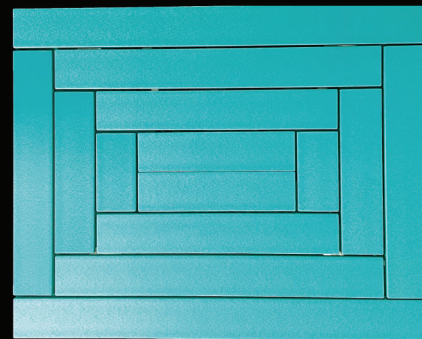


## Herringbone Table

Section 1.31 - 1.34

**Dining height only**

Available in all colors



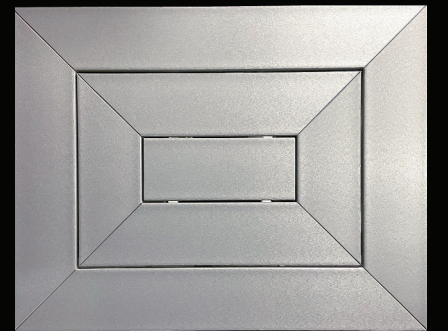
29"W x 36"D

(Seats 2)

## SQ Mitered Table

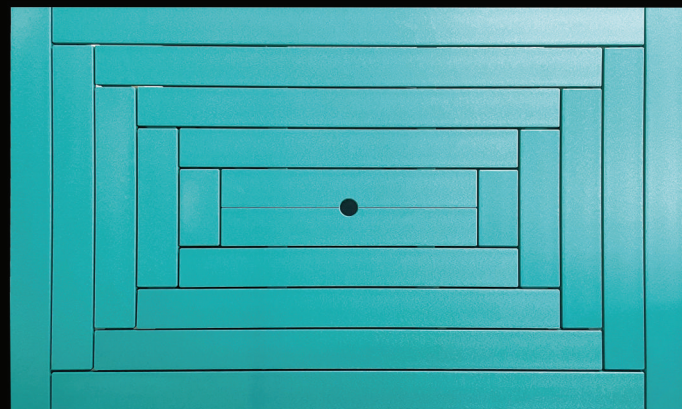
Section 1.16 - 1.24

Available in all heights & colors



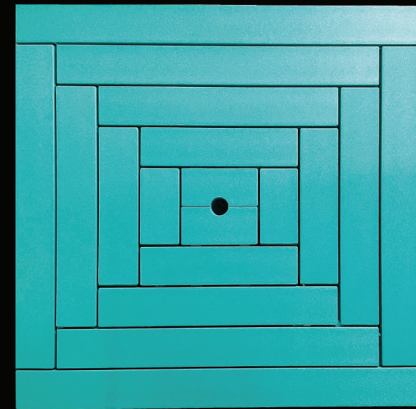
29"W x 36"D

(Seats 2)



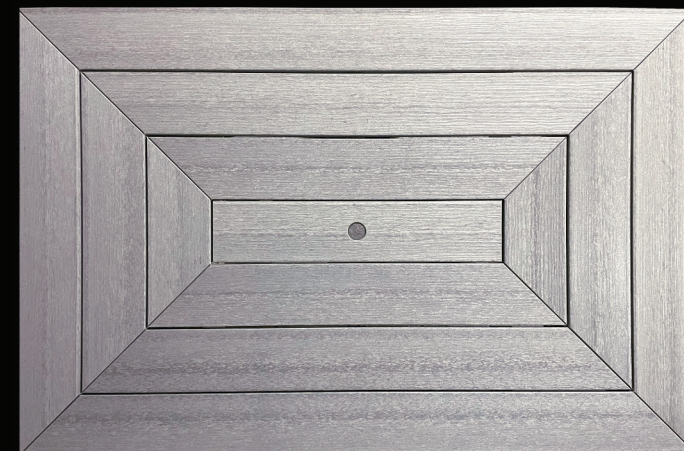
37"W x 60"D

(Seats 6)



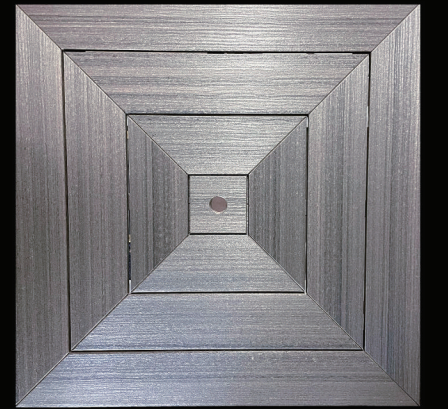
37"W x 37"D

(Seats 4)



40"W x 60"D

(Seats 6)



40"W x 40"D

(Seats 4)

# Round Tables

## 27" Round Tapered Base

Section 1.01 - 1.02

27"D x 36"H

Available Dining & Counter Height

Available in all colors



## 27" Round Straight Base Bar

Section 1.03

27"D x 42"H

Available **only** in Bar Height

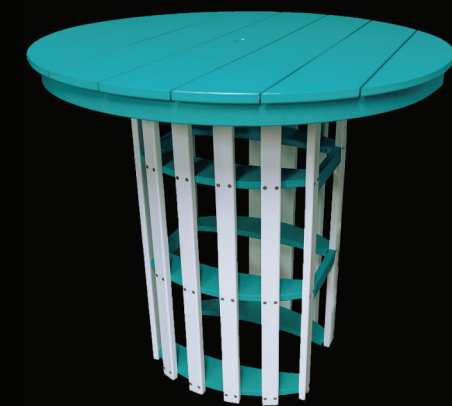
Available in all colors



## 38" Round Table

Section 1.04 - 1.06

Available in all heights & colors

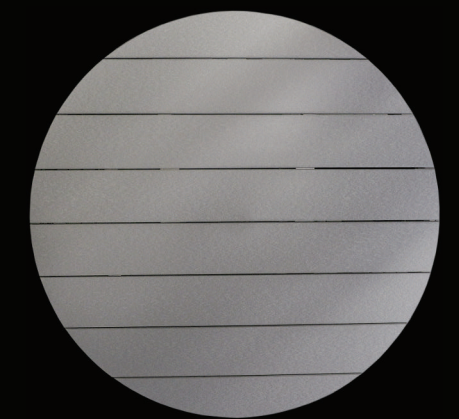


38" Diameter (Seats 4)

## 44" Round Table

Section 1.07 - 1.09

Available in all heights & colors



44" Diameter (Seats 4)



44" Round Counter Table (Section - 1.08)

Curvy Back Counter Chairs (Section - 2.08)

# Dining Chairs

You will get more than just a place to sit with any of our dining chairs. Built for comfort, style & strength. Available seat heights - Dining = 18" Counter = 24" Bar = 30". All Chairs and Benches are available in all colors.

## Curvy Back Chairs

Section 2.07 - 2.09



Dining  
24"W x 27"D x 38"H



Counter  
24"W x 27"D x 44"H



Bar  
24"W x 27"D x 50"H

## SQ 105 Chair

Section 2.04 - 2.06



Dining  
18"W x 23"D x 36"H



Counter  
18"W x 23"D x 42"H



Bar  
18"W x 23"D x 48"H

## SQ 180 Bench

Counter  
48"W x 15"D x 24"H

Available in dining & counter heights  
Section 2.10 - 2.11



# Accessory Tables

Available in 15", 19 1/2", 24", or 30" heights.

Available in all colors.

## Mitered End Table

Section 4.01 - 4.04



16 1/2"W x 22"D x 19 1/2"H shown  
Available in all colors

## Oval End Table

Section 4.09 - 4.12



16 1/2"W x 22"D x 30"D shown  
Available in all colors

## Slender End Table

Section 4.18



22"L x 12"W x 19 1/2"H only  
Available in all colors



## 6ft Buffet Table

Section 4.16

17"W x 72"D x 34" Height (Customizable)  
Available in all colors





6ft Surf Bar Table  
(Section 1.26)  
Saddle Stools  
(Section 3.06)

## 8ft Surf Table

Section 1.27 - 1.28  
Table Top: 24"W x 96"D  
Available in Counter & Bar  
Top Planks only available in white sheets or wood grain colors  
Accents available in all colors

## 6ft Surf Table

Section 1.25 - 1.26  
Table Top: 24"W x 72"D  
Available in Counter & Bar  
Top Planks only available in white sheets or wood grain colors  
Accents available in all colors



6ft A-frame

6ft

# Surf Collection

Combining beach style with the outdoor dining experience.



Section 1.29 - 1.30  
Shown in Bar Height



Section 1.25 - 1.26  
Shown in Bar Height

# Stools & Benches

Bring a new dynamic to your seating options. Our stools offer simple seating with style. Offering 2 different heights - Counter = 24" and Bar = 30".



## Surf Stool

Section 3.01 - 3.02  
11"W x 16"D  
Available in all colors



## Bongo Stool

Section 3.03 - 3.04  
13 1/2" Diameter  
Circles only available in white sheets or wood grains

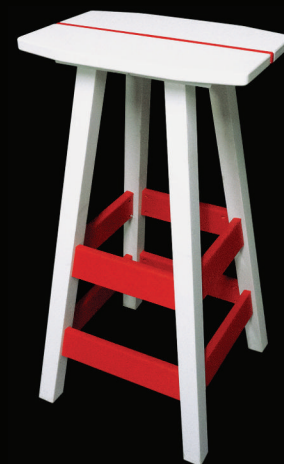


"This mini masterpiece is the perfect accent for that little space you were looking to fill on your porch, patio, or in your garden."



## Oval Stool

Section 3.07 - 3.08  
11"W x 16"D  
Available in all colors



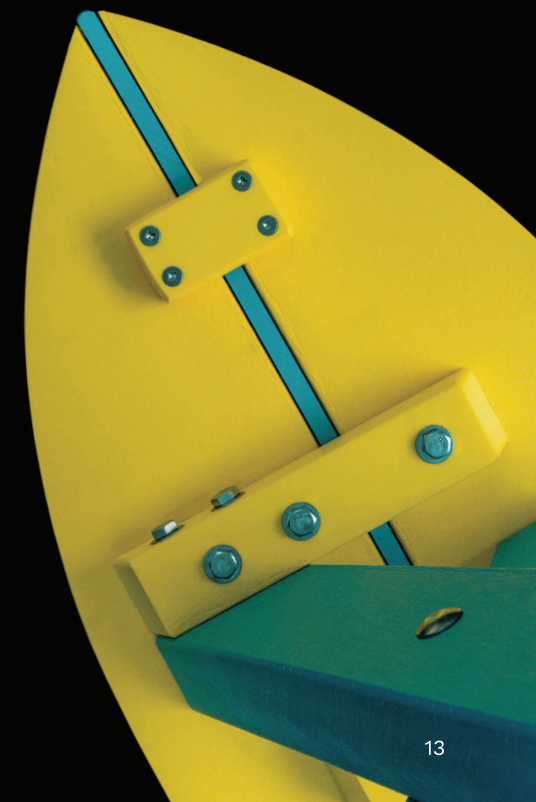
## Saddle Stool

Section 3.05 - 3.06  
11"W x 16"D  
Available in all colors



## Surf Bench

Section 3.09  
48"W x 11"D x 18"H  
Available in all colors



# Adirondacks

All the thought went into the style, We had no idea it would match in comfort. This laid back adi-ottoman suit has the perfect contour to make relaxing your job.



For the alert and social. The adi up is perfect for any casual hangout. For more relaxation you can elevate your feet with a matching ottoman.

## Coastal Ottoman

Section 5.02  
22"W x 21"D x 15"H



## Coastal Adi

Section 5.01  
31"W x 35"D x 37"H  
Seat height 15"-11"  
Arm height 21"

## Adi Up Ottoman

Section 5.031  
22"W x 18"D x 16"H



## Adi-Up

Section 5.03  
31"W x 31"D x 42"H  
Seat height 17"-13"  
Arm height 22"



## Coastal Glider Set

2 Single Gliders / 1 Oval End Table

Section 0.06

# Coastal Glider



Section 7.03  
32"W x 34"D x 42"H  
Seat height 16 1/4" - 19 1/4"  
Arm height 24 1/4"

# Love Seat Glider

These smooth moving benches will make you feel like you're on a cloud. Features a drop down console.



Section 7.01  
63 1/4"W x 25"D x 44 1/2"H  
Seat height 16 1/4" - 19 1/4"  
Arm height 24 3/4"

# Combos

## Side By Side

2 Adi-Up Counter Height Chairs with Tray Table Connector.

Section 0.01



## Balcony Set

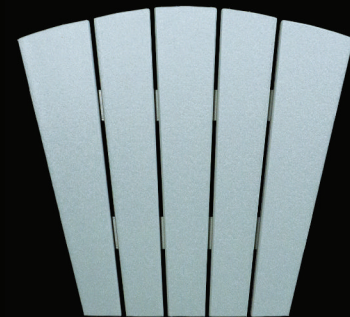
2 Curvy Back Counter Chairs with 30" Oval End Table.

Section 0.02



## Adi-Up Counter

31"W x 34"D x 43"H  
Seat height 26"-22"  
Arm height 31"  
Section 5.04



## Tray Table

19"W x 17"D  
Section 5.05

## 27" Bar Dinette

2 SQ105 Bar Chairs with 27" Round Table.

Section 0.03





## Contempo Adi Set

2 Contempo Adi Chairs / 1 Contempo Adi Table  
Section 0.05



### Contempo Adi

Section 5.06  
32"W x 27"D x 41"H  
Seat height 17"-13"  
Arm height 22"



### Contempo Table

Section 4.17  
16 1/2"W x 22"D (Front 13")  
Table height - 19 1/2"



### Flat Chaise

Section 6.02  
22"W x 69"L x 38"H  
Seat height - 13"  
Flat length - 75"  
Seat length - 45"

### Coastal Chaise

Section 6.01  
31"W x 69"L x 38"H  
Seat height 12" - 13"  
Flat length - 77 1/2"  
Seat length - 45"



# Bar Island

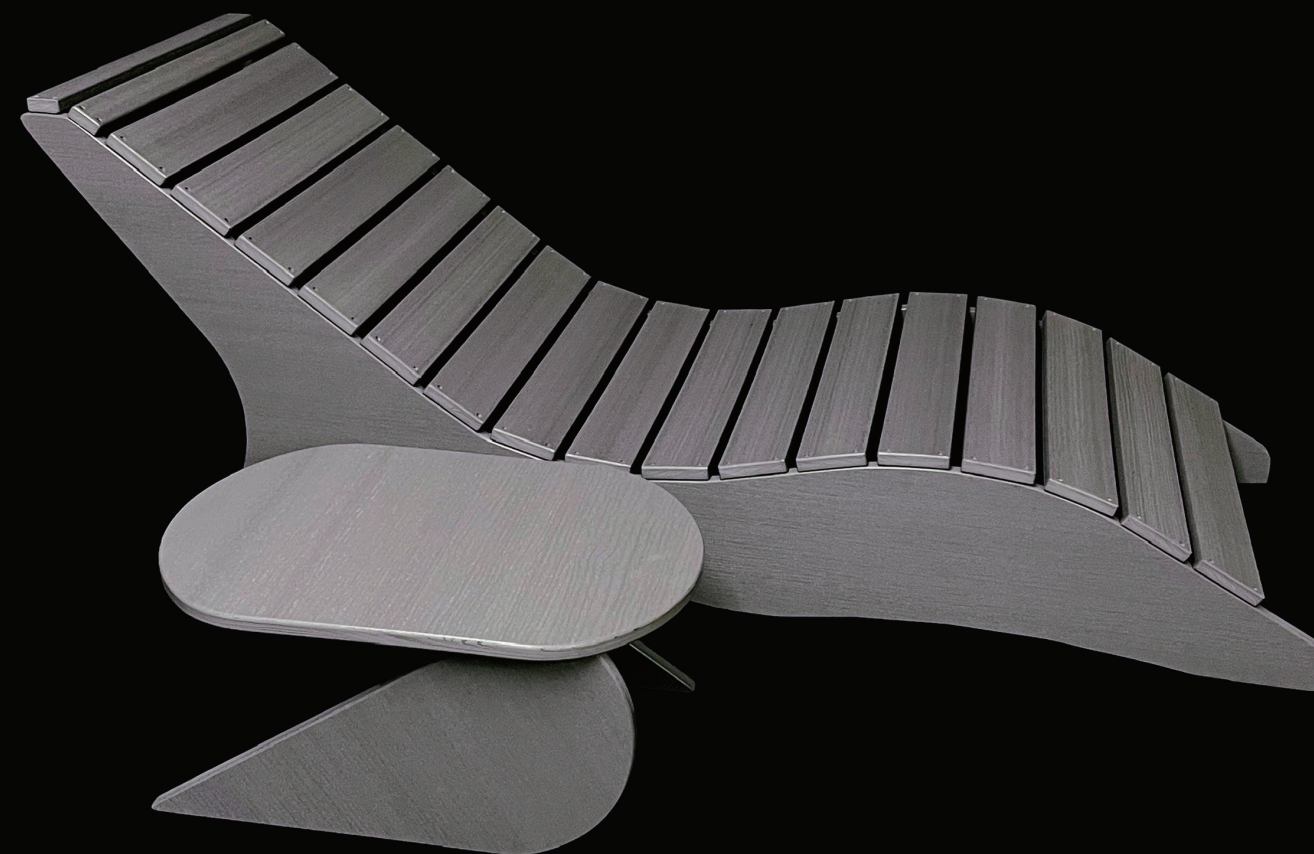
Combining beach style with the outdoor dining experience.



## Bar Island

34"W x 66"L x 42"H

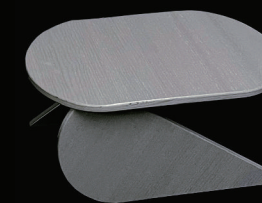
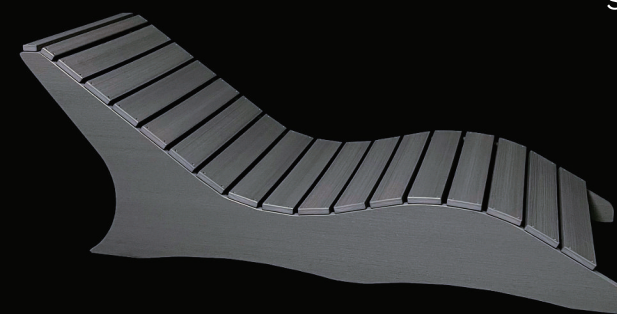
Section 9.01



## Royal Chaise Set

2 Royal Chaise Lounge Chairs  
with Royal Chaise Table.

Section 0.04



## Royal Chaise

Section 6.03

22"W x 66"L x 24 1/2"H

Seat Height 8" - 10 1/2"

## Royal Chaise Table

Section 6.04

16"W x 22" Oval x 11"H

# Warranty & Care

Phoenix Outdoor warrants any original defects in production and HDPE materials for a period of twenty years for residential use and five years for commercial use. This warranty will not cover any damage from unauthorized repair, modification, or normal wear and tear.

HDPE may scratch, chip or fade due to intense sunlight. HDPE is expected to endure slight expansion and contraction when placed in conditions with changing humidity and temperatures. This is considered normal wear and tear and does not sacrifice the structural integrity of the product.

Stainless steel hardware and supports may rust under extreme weather conditions if not maintained properly. This warranty does not cover damage or collapse due to rusty hardware or supports.

In order to be covered under warranty, there must be proof that an original defect exists. This can only be done at the original retailer where the Phoenix Outdoor product was purchased. Granted that Phoenix Outdoor decides to repair or replace a product that is no longer available, the original purchaser will be given a substitution of a congruent style, performance, and value

How to clean and care for your HDPE furniture. If dirt gets trapped in the crevices of the embossed texture, do not try to rub it out. It will leave a mark. You'll need to place it in direct sunlight during the hottest part of the day. This will expand the poly. Then rinse the pieces with a water hose using moderate pressure. (DO NOT PRESSURE WASH) Spray with water and 25% bleach. Let sit for 10 minutes and rinse off. Dry with a towel or let drip dry. Then apply a safe plastic conditioner such as Armor all. For the Hardware apply a rust inhibitor with a small paint brush.

## Order Information

The Punchline is a wholesale manufacturer that sells only through qualified retail distributors or commercial contracts. To see about carrying our Phoenix Outdoor line, or if you have a commercial project that needs outdoor furniture, call Dan Pacini @ 954-650-8143.

## Colors

Visit our site to see high-res photos of all stock colors.



*The Punchline, Inc*



MADE IN THE USA

MADE WITH  
**TANGENT**  
SUSTAINABLE LUMBER